

# Enterprise Connectivity

## Cost-effective, enterprise-grade connectivity

Accelerate digital transformation with an enterprise-grade network that adapts to your business and supports your staff with fast and reliable access to the systems and applications they need to deliver great customer experiences.

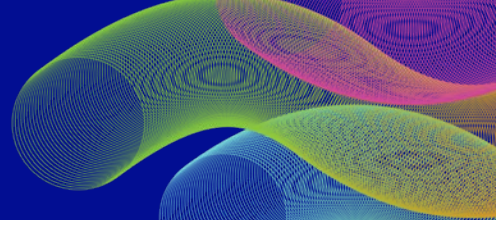
Vocus' Fast Fibre is a scalable and reliable solution delivered over our owned and operated fibre network and the nbn®. Our network connects to all 121 nbn® Points of Interconnect (POI's) bringing our fibre network as close as possible to your locations.

Telstra Ethernet Access service is connected to all 5 mainland capital city POI's (Melbourne, Sydney, Brisbane, Perth & Adelaide). With speeds from 100Mbps up to 10Gbps, Fast Fibre is a future-ready solution with the flexibility to increase speed and bandwidth as your business grows. We offer symmetric speeds for faster data uploads and downloads, and optional wireless back-up & Fast Turn-up2, reducing downtime and enabling faster deployment.

### Fast Fibre plans summary

	Third-party access		
	Vocus Fibre	nbn® Enterprise Ethernet	Telstra Ethernet Access
100Mbps	N/A	✓	✓
200Mbps	N/A	N/A	✓
250Mbps	✓	✓	N/A
500Mbps	✓	✓	✓
1Gbps	✓	✓	✓
2Gbps	✓	N/A	N/A
5Gbps	✓	N/A	N/A
10Gbps	✓	N/A	N/A
Included monthly data	Unlimited		
Contract terms	24/36/48 months	12/24/36/48 months	
Network termination unit	Vocus supplied NTU	Vocus supplied NTU when delivered to more than 1 service	Vocus supplied NTU when delivered to more than 1 service
Router	Vocus supplied, managed router or BYO options		
Symmetric speeds	✓		✓
Service availability	99.95%		99.90%
SLA's	Premium 4 (24x7) included	nbn Premium Assurance 12 (24x7) included. Options to upgrade to Premium Assurance 4, 6, 8 (24x7)	Telstra Business Plus 12 (24x7) included. Option to upgrade to Express 8 (24x7)
Technical support	24x7 (365 days per year)		

**Terms and Conditions:** 1. Vocus Fast Fibre Service is not available in all areas or to all premises. Availability is subject to a service qualification check which we will perform when you request to sign up. 2. Wireless back-up and Fast Turn-up services are only available in 5G and 4G coverage areas and requires a successful service qualification check. Requires Vocus-supplied Customer Premise Equipment (CPE). Charges apply for CPE, and Fast Turn-up charges apply until Fast Fibre service is activated. 3. You can upgrade your Fast Fibre plans and speeds at any time in the Frontier Portal or by contacting your Account Manager. The amount will be pro-rated on your next bill based on the number of days used for each plan. The Plans and Speeds available to your premise depends on the technology used to deliver the Fast Fibre Service. 4. You will require a Vocus supplied network termination unit (NTU) to split your Fast Fibre bandwidth across multiple services. Vocus Fast Fibre services supplied without a Vocus NTU can only be allocated to a single service. Only Internet (standalone) can go up to 10Gbps. You may split some of your bandwidth across multiple services which will have a combined maximum speed of 1Gbps. Additional charges apply per service. 5. Only a maximum of 952Mbps speed is achievable on nbn® Enterprise Ethernet 1Gbps services due to nbn® technical limitation.



### You get

- ✓ High-speed fibre internet
- ✓ Unlimited data
- ✓ Optional wireless back-up and Fast Turn-up<sup>2</sup>
- ✓ Managed services centrally in our customer portal - Frontier
- ✓ Enterprise-grade service availability SLAs
- ✓ 24x7 technical support



**Want to learn more about how we can help you?**  
**Reach out to your authorised Vocus Partner**

### This means

- ✓ High-speed access to your systems and applications on a national fibre network
- ✓ Peace of mind with unlimited data and no excess usage charges
- ✓ Faster deployment and reduced downtime with optional 5G or 4G wireless back-up<sup>2</sup>
- ✓ Flexibility to upgrade Fast Fibre speeds and bandwidth as your business grows
- ✓ A reliable network you can count on with dedicated SLAs and 24x7 support

### Three simple steps to get your site up and running

1. **Service Qualification:** We'll check your address and advise what access type and speeds are available to your location.
2. **Installation & Activation:** We'll arrange for a PIPE Networks or nbn® / Telstra Technician to attend your site to install the service or we'll remotely activate the service if possible; If Fast Turn-up is selected, we'll organise a separate technician visit and connect you on the 5G or 4G network before your fibre service is activated<sup>2</sup>.
3. **Ready-to-go!** You will get reliable access to the Internet and your business-critical services on fibre speeds.

### How does it work?

With Fast Fibre, you can choose to allocate your bandwidth just to the internet, or you can split your bandwidth four ways across data, internet, voice or cloud based on your business requirements (across a maximum of four products).

